

3D Laser Scanning & 3D Modelling for...

Insurance & Underwriters



Laser Scan to 3D Model
King's House, Manchester

Severn Partnership have been developing skills in 3D laser scanning since 2004 and providing call-off support for the UK Health and Safety Executive since 2010.

So combining our RICS Chartered status with an established quality system (audited by BSI) and state of the art Leica HDS scanning equipment we are able to offer a comprehensive service to the Insurance sector.

What is Scanning?

Capturing 3D measurements to model the environment — be that buildings, statues, topography, trees or explosion wreckage. This captures the data at a point in time, which may be pre or post incident.

Why Scan?

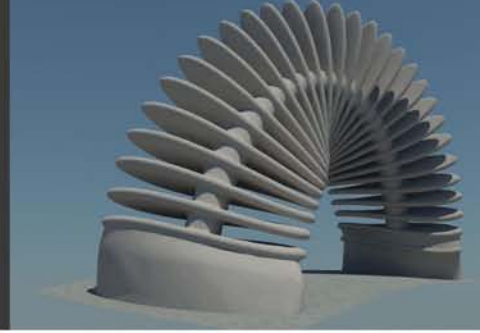
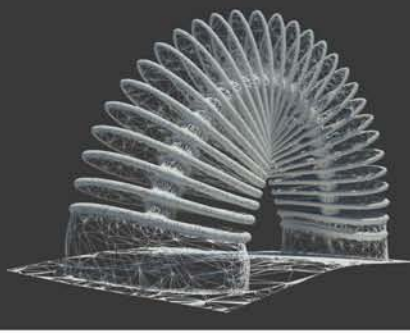
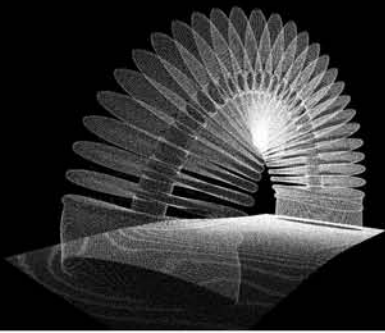
Having accurate 3D documentation of commercial property can save time and money in disaster recovery, planning, reconstruction, valuation and alleviating production delays.

Scanning is remote, reflectorless measurement and thus safe in dangerous environments (survey from up to 100m away). This is also ideal for incident/forensic investigation where the surveyors need to avoid contaminating the scene.



Working at safe distances in potentially hazardous environments





Applications for Scanning & Modelling

- Baseline condition and asset recording
- Situational awareness and security planning
- Subrogation claims evidence and investigations
- Archiving of data for future investigation
- Quantifying rebuilding costs
- Assisting in witness statements
- Event reconstruction & timelines

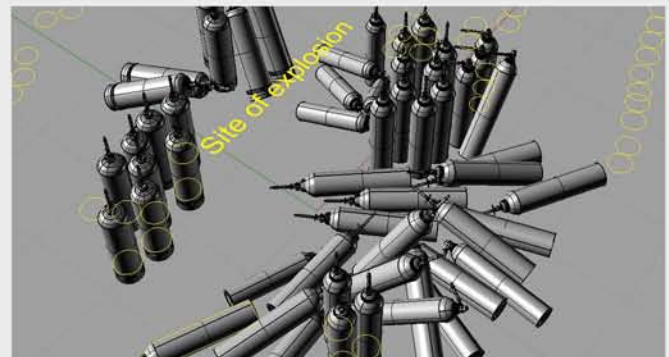
Examples of our Experience

Severn Partnership has provided forensic laser scanning, 3D modelling & visualisation solutions for the following incidents since January 2010 for the HSE:

- Shrewsbury, Shropshire - Building explosion
- Huddersfield & Garforth - Factory fire investigation
- Lindsey & Pembroke - Oil refinery explosion
- Bristol & Immingham - Warehouse explosion
- Worlingworth, Ayrshire & Goodwood - Industrial accident

Project Deliverables

- Archive of 3D point cloud data
- Leica TruView dataset - accessed via web browser
- 3D CAD model
- 3D animations, visualisations & photomontages
- 3D reconstruction
- 3D PDFs
- Plans, sections, elevations & ship survey reports



Contact [Nick Blenkarn](#) or [Mark Combes](#) to arrange a free visit and talk through your potential requirements.

t: 0844 80 8247

e: info@severnpartnership.co.uk

www.severnpartnership.co.uk

www.3d-model.co.uk